

Design description

Particularly in double-shell claddings, this system offers high flexibility for construction and glass structure. It is a special design whose technical realisation will be accomplished according to customer requirements. For this purpose, the technical consultation is intended prior to the planning phase.

Design

- Spot-held superimposed glass lamellas, fixed to on-site sub-construction by means of pivoting or fixed stainless steel panels

Glazing

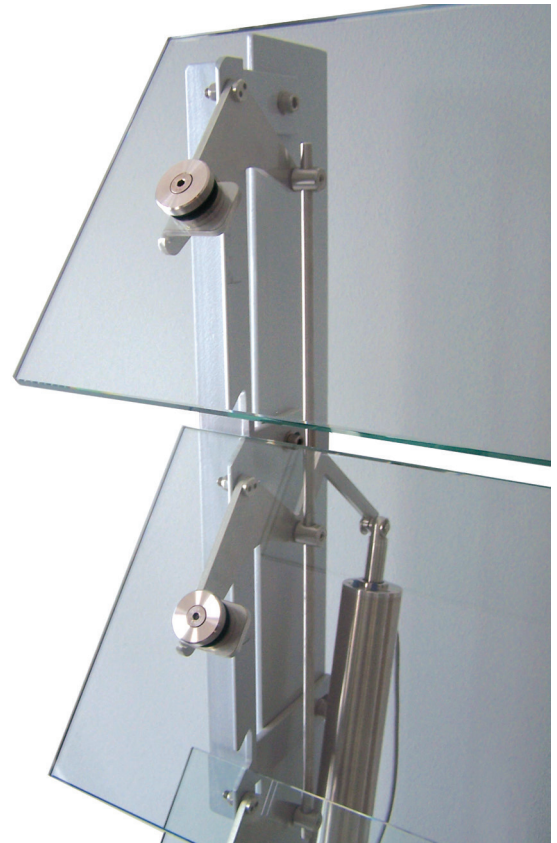
- Patent glazing
- LSG made of 2 x heat soaked toughened safety glass or LSG of 2 x TVG (heat-strengthened glass) or heat soaked toughened safety glass according to structural calculations
- Total glass thickness 6-16 mm

Fittings

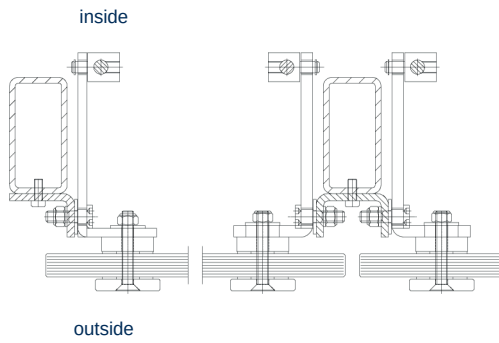
- Fittings of stainless steel
- Operation of electric motor optionally 230 V or 24 V
- E-drive protection category IP 65

Surface treatment

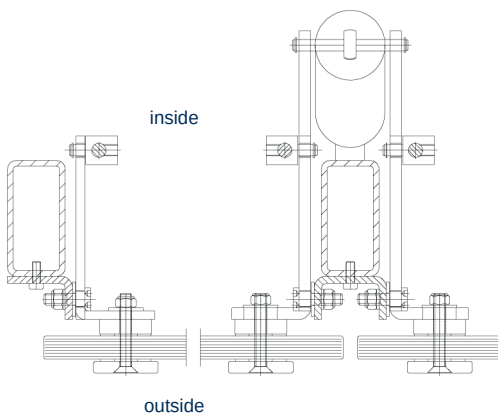
- stainless steel 1.4301



**horizontal section
(without drive)**



**horizontal section
(with drive)**



vertical section

